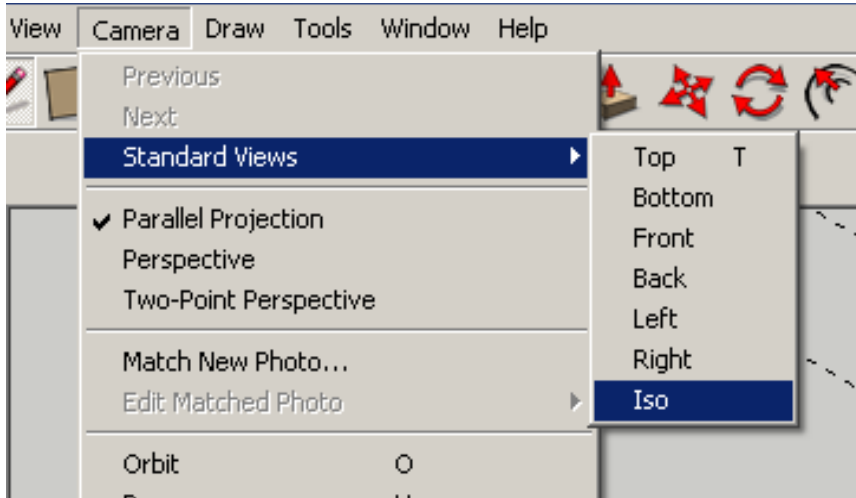


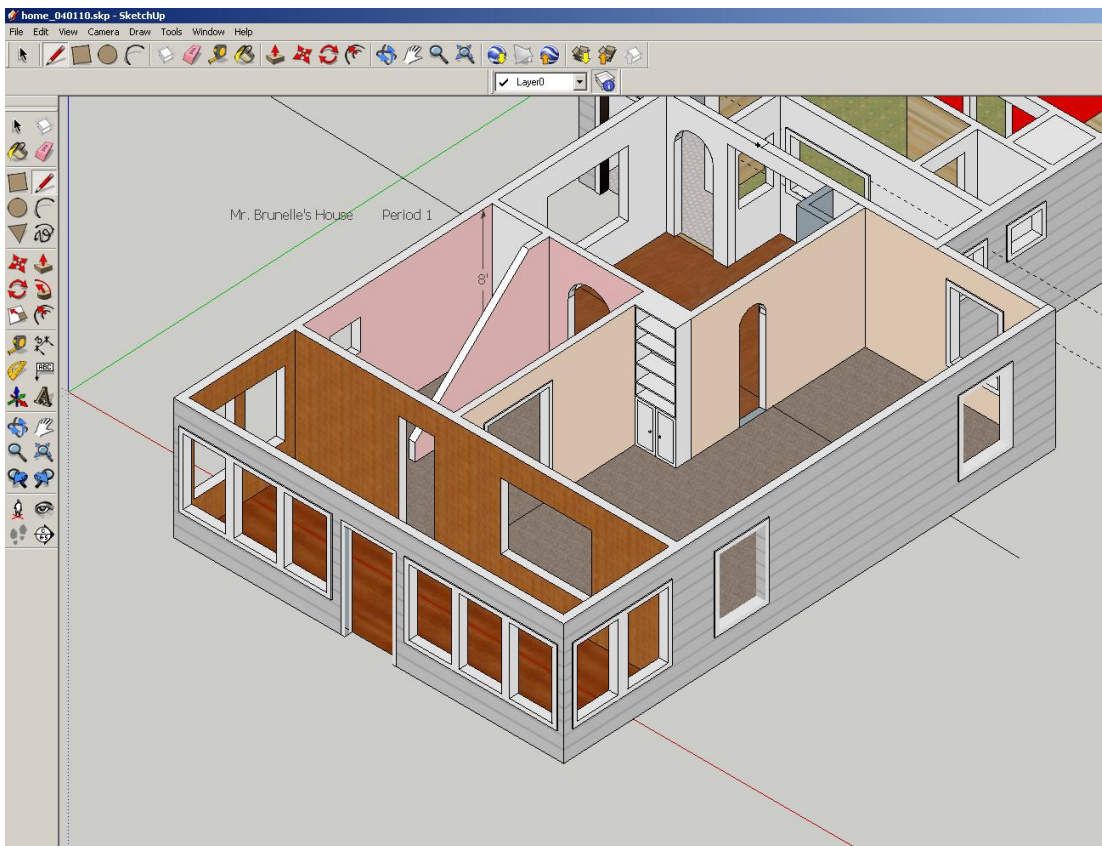
How to Export your Sketchup Projects as Images

You will need to export TWO files. (1) will be an Isometric View, and (2) will be a Plan View (Top View). ***FOLLOW THESE DIRECTIONS***

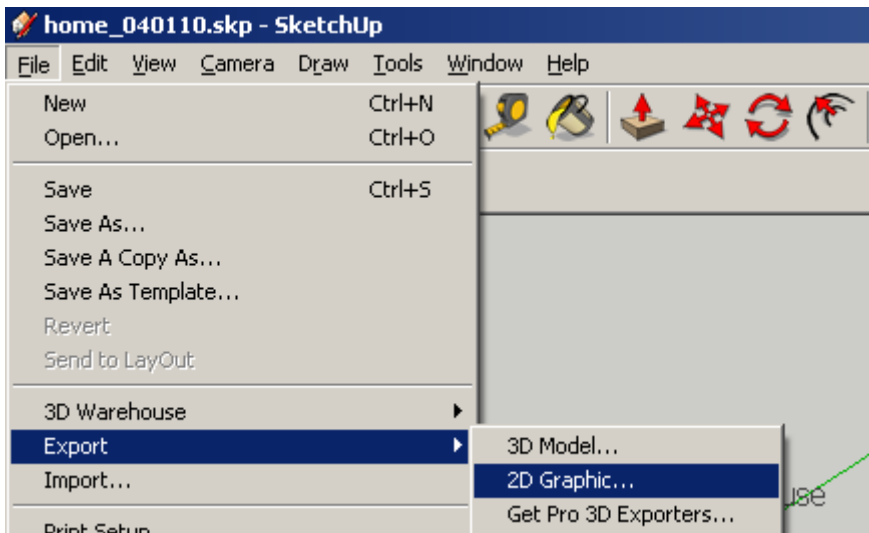
1. Go to **Camera > Standard Views> Iso**



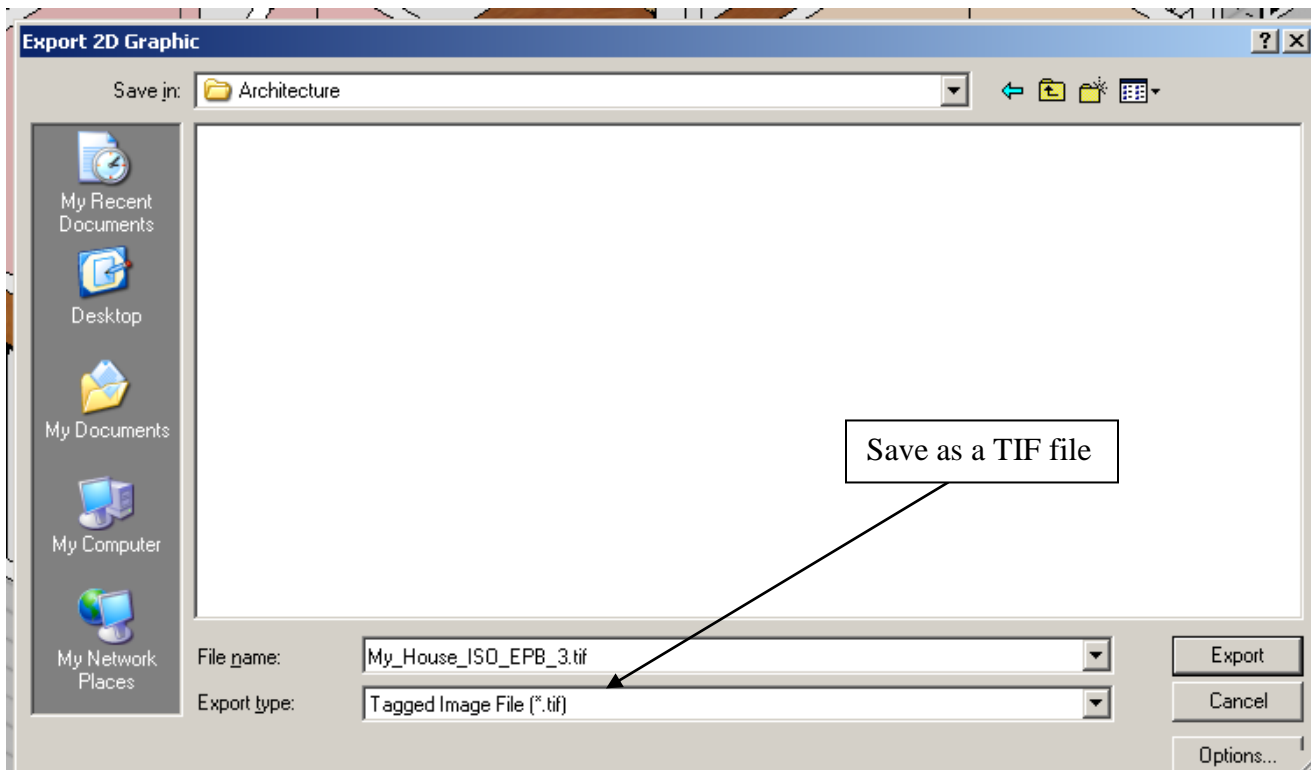
2. Your Floor Plan should look like the one below:



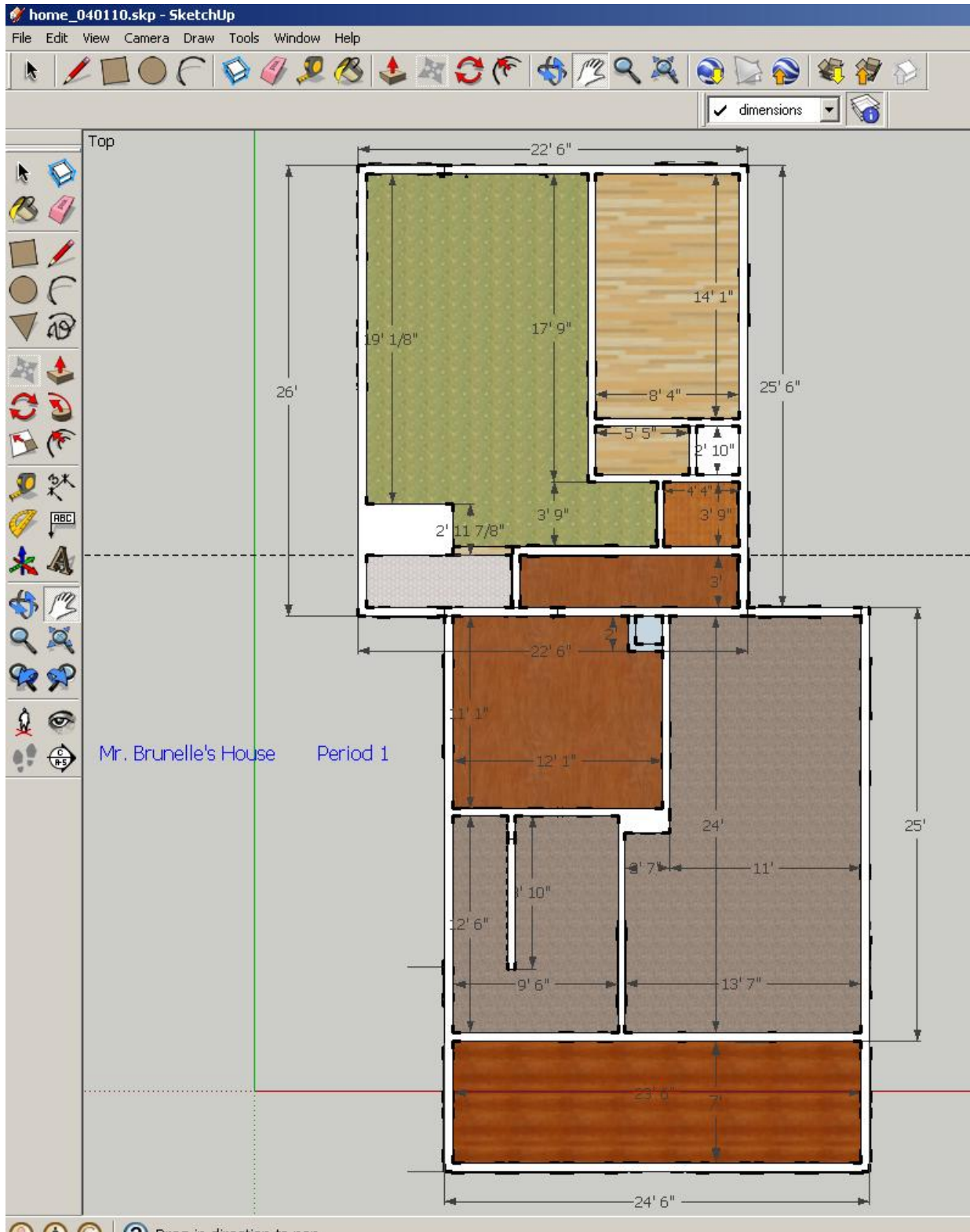
3. Export the image: Go to **File > Export > 2-D Graphic**



4. Save your image in your **H Drive > Architecture folder** - as a TIF file. Be sure to Save As **“My_House_ISO_INL_2”** (your initials instead of “INL”, your period number instead of “2”) – see below.



5. Repeat this procedure for your **Plan View**. Go to **Camera > Standard Views > Top**. Save the **Plan View** file as “My_House_PLAN_INL_2” – again, YOUR initials and YOUR period number.



***BE SURE THE WHOLE VIEW FITS ON YOUR SCREEN.
USE “ZOOM EXTENTS” TO MAKE IT FIT.***