


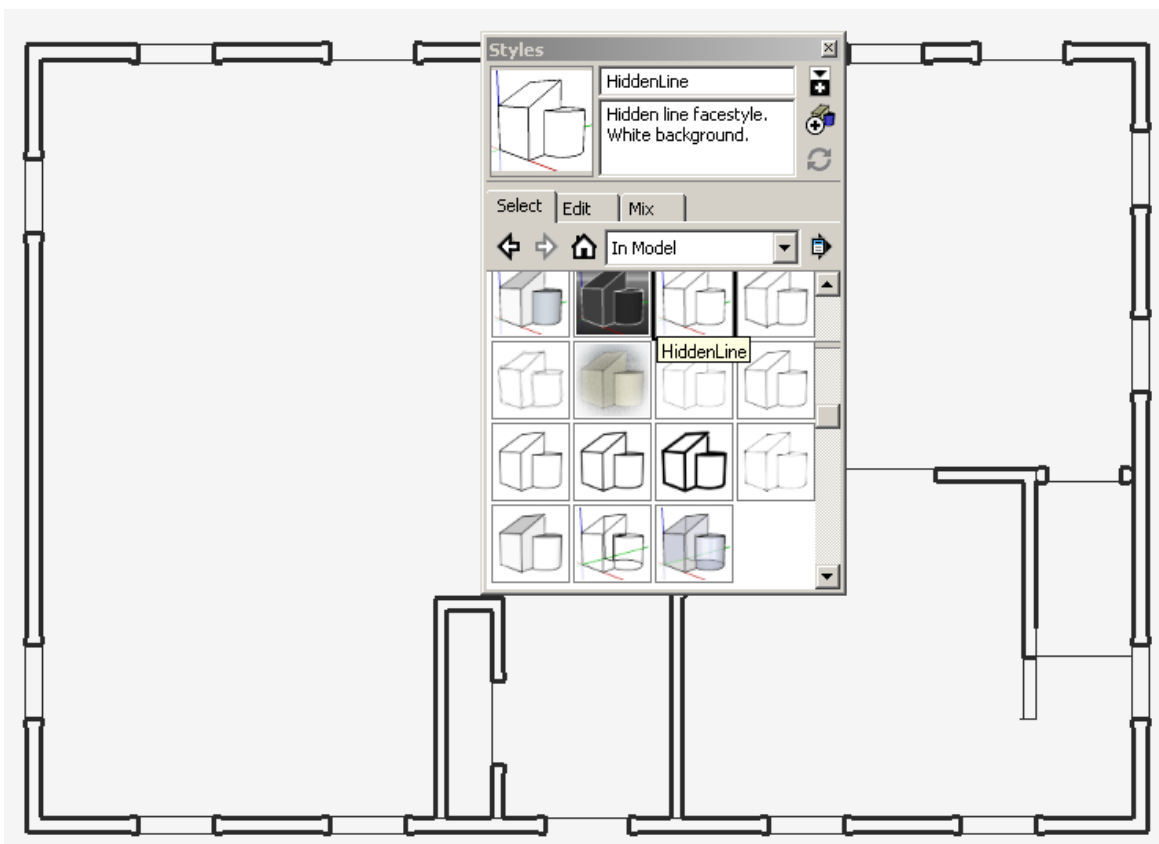
Creating Architectural Concept Drawings in Sketchup

Sketchup isn't a CAD program in the traditional sense – you cannot export *real* CAD Drawings. You can, however, derive *concept drawings* from Sketchup – which is the purpose of this lesson. We will use these drawings to create **3-D models** using foam board and other materials. We will create the following concept drawing elevations:

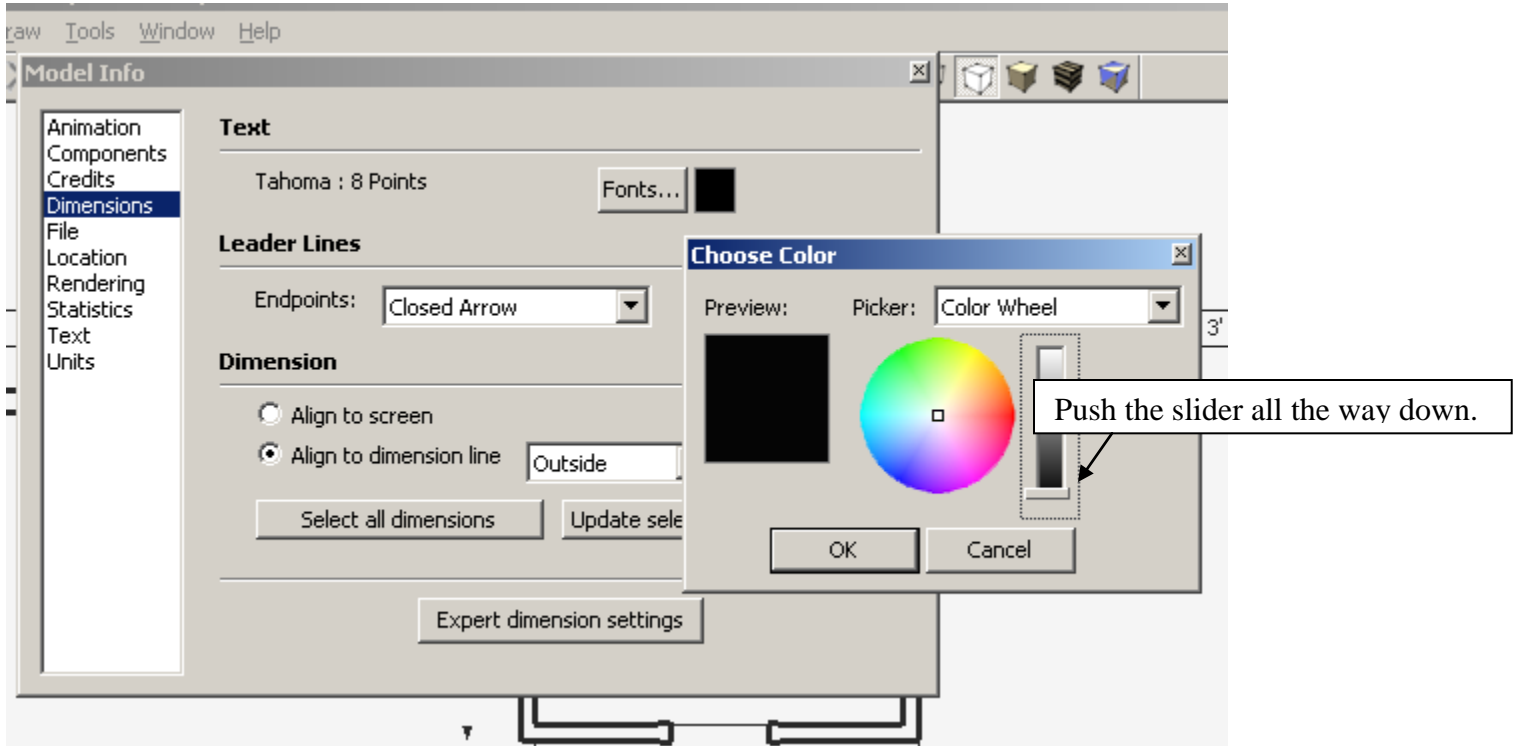
- Plan View
- Front Elevation
- Rear Elevation
- Left Side Elevation
- Right Side Elevation

I. Create the Plan View

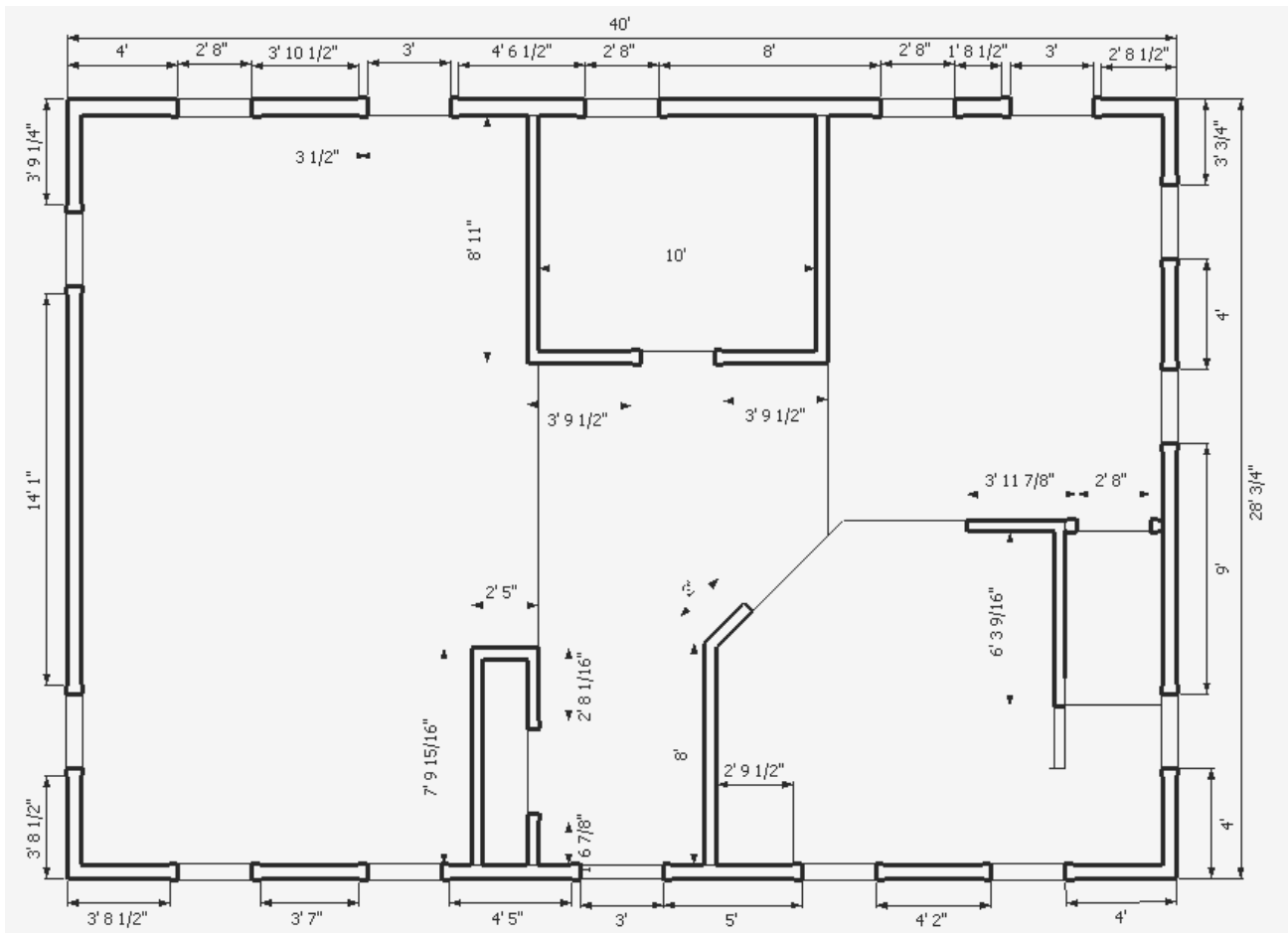
- Open your *House* file. Decide on the floor that you will be using for the plan – first or second floor.
- Make the Roof layer invisible.
- Go to an Iso View.
- Use the Section Plane tool  to section down to a height that cuts across the windows and doors. [Watch Video](#)
- Make all other layers *invisible*, except for the floor you will be working on.
- Go to **Top View**. Next, we need to set our *Style* so that it looks like an architectural drawing.
- Go to **Window > Styles > In Model > Hidden Line**.




H. Go to **Window > Model Info > Dimensions**. Change the **Font Size** to “8”, and the color to full **black**.



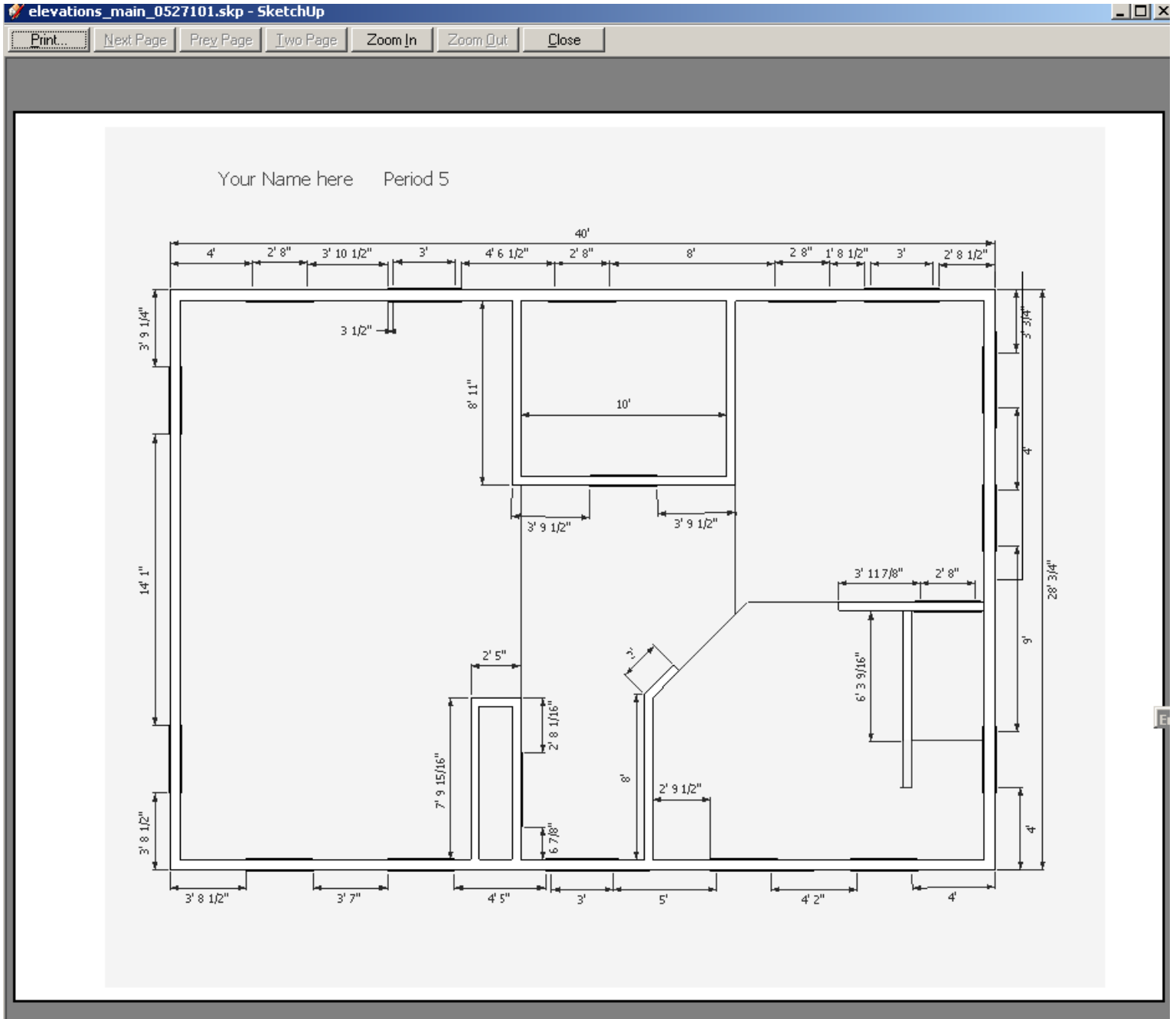
I. Add all the dimensions that you will need in order to make all of the wall sections and window cutouts for your model.



J. Use the **Text Tool**  to put your name on the drawing.


K. Go to **File > Print Setup > HP 4200 > Landscape**.

L. Go to **File > Print Preview**. Your preview should look like the one below:

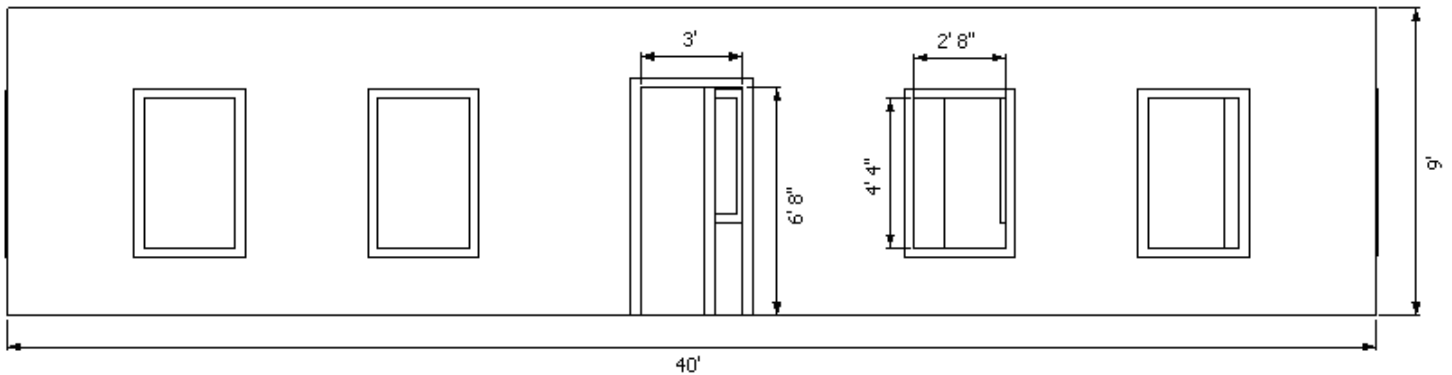


M. Go to **File > Print** and print your drawing.

II. Create the Elevations

- A. *Select* and *Delete* the *Section Plane*.
- B. Make the “Dims” Layer *invisible*. Then, create a new layer and name it “**Dims Front**”. Make Dims Front the *active layer*.
- C. Click on the **Front View**  icon.
- D. Dimension the view like the one below. Don't forget to *put your name and period* on the drawing.
- E. Add “Front Elevation” to your drawing.

Your Name Here Period 5 Front Elevation



- F. Repeat the process for *Rear Elevation*, *Right Side Elevation* and *Left Side Elevation*.
- G. Repeat the **Print Setup > Print Preview > and Print** sequence for each drawing.
- H. You should have a packet of five drawings when you are finished.